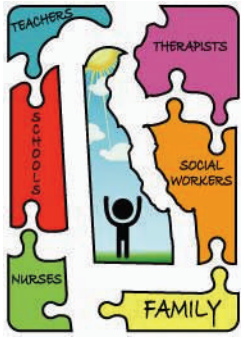


The Dream: Families, Faculty and Early Childhood Intervention



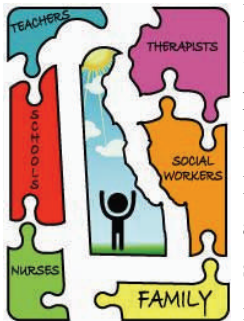
Imagine - the journey of *your* family being an integral part of the curricula that prepares early childhood intervention personnel, therapists, nurses, and teachers to enter the work world and provide services to your child with special needs.

Imagine - a solution to the dilemma of not being able to mandate sensitivity in the curricula.

Imagine - families, faculty & early childhood intervention partnered in the pursuit of excellence. *Delaware New Scripts* works with

each of the pieces of the puzzle that are needed to maximize your child's development and works to ensure that the *family voice* is heard and influences how services are provided.

What is **DELAWARE** New Scripts?



Delaware is one of many states that have initiated the New Scripts program for families, faculty and early childhood intervention willing to collaborate in preservice personnel preparation programs. Hence, SCRIPT - Supporting Change and Reform in Interprofessional Preservice Training. *Delaware New Scripts* Family Inclusion Project partners families with professionals who provide support, resources and early childhood intervention service to families with infants and toddlers with special needs. Delaware New Scripts is designed to develop, test, and evaluate an innovative model for facilitating preservice improvements. *Delaware New*

Scripts believes that partnerships between families and providers are vital for a quality, family-centered system of support. Research and experience have shown the value of families participating in all activities of our early intervention system. When families and providers work together for a common goal and build upon each other's strengths, the providers are more likely to use helping behaviors that are empowering to

Families as Presenters

Families can share their stories in a variety of ways. They can agree to co-teach in a classroom setting. Involvement of the family could be visiting the classroom as a guest speaker or partnering in the development of the curricula.

Families could also allow a visitor to come into their home and *experience* daily life in a family of a child with special needs. The student would only be there to observe what transpires in the course of the day. Visitation could be for as few as one visit or several visits extended over a period of time.

If you want to share your families' journey or need the services of a **DELAWARE New Scripts parent/family, please contact Michelle Lamers, Parent Coordinator at (302) 999-7394, or toll free at (888) 547-4412 or via Email at lamersmm@aol.com**

Mission & Goals

Delaware New Scripts Mission:

To promote families as change agents in order to enhance the early childhood experience for Delaware children and families.

Delaware New Scripts Goals:

- To participate in the design and implementation of professional development for current and future early childhood intervention personnel.
- To inspire and facilitate collaborative relationships among families, service providers, educators, and related agencies.
- To engage in opportunities to create and strengthen family-centered systems and structures in early childhood intervention.



Funding for Delaware New Scripts is provided by:

Delaware Department of Education

Delaware Developmental Disabilities Council

Delaware Health and Social Services

Birth to Three Early Intervention System



“Embedding the family voice in all aspects of early childhood”